



# HD IMAGING AT A GREAT VALUE

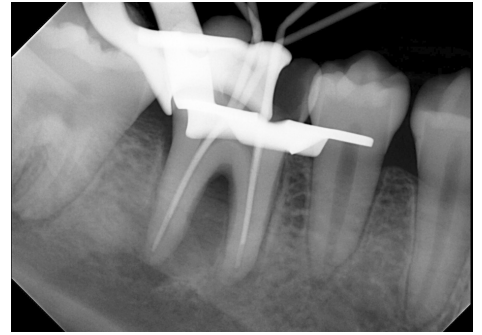


- True HD image resolution of 20 lp/mm
- Durable engineering for reliable performance
- Available in size 1 and size 2
- 3-year warranty with no deductible

## The Synergy of Performance and Value

With the introduction of the TUXEDO Intraoral Sensor, you no longer have to compromise image quality for affordability.

- HD image resolution of 20 lp/mm
- Next-gen CMOS sensor technology
- A fraction of the cost of comparable sensors



## Enhanced Durability With a 3-Year Warranty

The TUXEDO Intraoral Sensor has been manufactured to provide exceptional performance and long-term durability with a warranty program to back it up.

- Hermetically sealed for water and liquid resistance
- Kevlar reinforced, robotics-grade cable
- 3-year warranty for peace of mind



## Seamless Software Integration

TUXEDO sensors integrate seamlessly with Apteryx XrayVision and XVWeb cloud imaging software, in addition to Prof. Suni, Cliniview, and other imaging software platforms, providing an efficient image acquisition workflow, along with great image quality.

- Direct integration with XrayVision, XVWeb, Cliniview, OneView, Prof. Suni, ImageXL, and Dentiray imaging
- TWAIN integration with Dexis version 10 or higher, Carestream and most major imaging software systems



## Product Specifications

|                          |  |                          |  |
|--------------------------|--|--------------------------|--|
| <b>Sensor technology</b> | CMOS   | <b>Sensor dimensions</b> | Size 1: 24.4 x 36.8 mm<br>Size 2: 30.5 x 42.8 mm |
| <b>Resolution</b>        | 20 lp/mm   | <b>Sensor thickness</b>  | 5.3 mm (Size 1)   5.6 mm (Size 2)                |
| <b>Sensitive area</b>    | Size 1: 19.95 x 30.02 mm<br>Size 2: 25.99 x 36.00 mm | <b>Cable length</b>      | 3 m  |
| <b>Pixel dimensions</b>  | 19 x 19 µm   | <b>Cable diameter</b>    | 3.5 mm   |