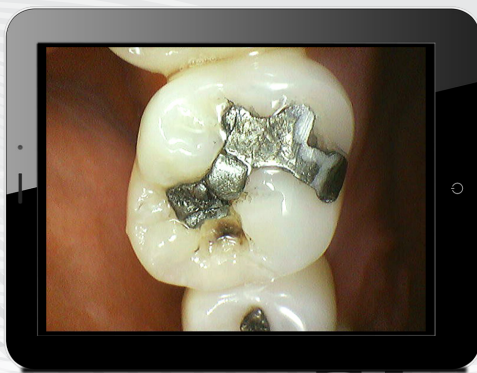


LED | IC100



SEE WHAT YOU'VE BEEN MISSING



- HD resolution for crystal clear images
- Autofocus lens simplifies image capture
- Plug and play USB interface
- 2-year manufacturer's warranty

Solid Performance

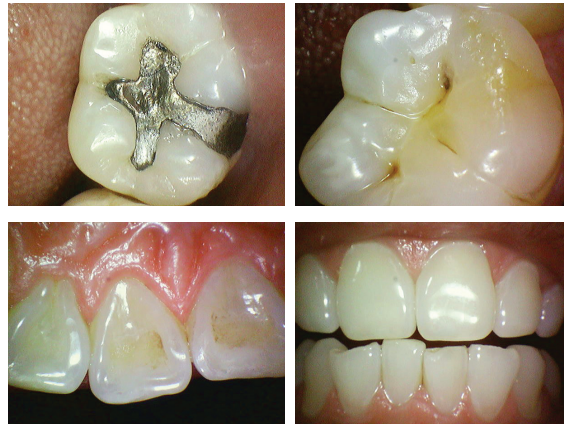
The LED IC100 is designed to provide superior performance. As a true plug-and-play technology, it integrates seamlessly into your digital workflow. It's compatible with most imaging software systems, plus there are no drivers to install.

Ease of Use

This easy-to-use camera was designed with user and patient comfort in mind, and it requires little or no learning curve. Its uniform LED illumination, lightweight design and intuitive point-and-shoot operation make it easy to master the camera on the first use.

Sharp, Clear Images

The LED IC100 really delivers where it counts: capturing vivid, high-resolution images that are highly diagnostic. Readily visible and obstructed areas take on a whole new light and its aspheric lens prevents image distortions.



Unsurpassed Value

Best of all, the LED IC100 provides your practice with an exceptional value. It's priced at hundreds less than comparably equipped cameras and it comes with a full two-year warranty, including immediate replacement coverage.

The camera provides further value through its portability. Its USB 2.0 connectivity means that it can be easily and efficiently moved from one operatory to another.

To learn more about how you can put the leading-edge, easy-to-use LED IC100 to work in your practice, contact us today at 330-382-5733.

Product Specifications

Sensor type	CMOS
Resolution	768 x 494
Focus	Automatic
Focus range	9 mm – 35 mm
Illumination	Dual LEDs

Angle of view	62°
Connectivity	USB 2.0
Cable length	3 m
Dimensions	7.59 in x 0.78 in x 0.85 in
Weight	34.5 g

